

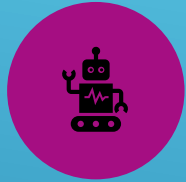
A STRUCTURED STARTING
POINT FOR INTERNAL AI
CONVERSATIONS



BASED ON THE AI
CAPABILITY ROLLOUT
FRAMEWORK

AI CAPABILITY ROLLOUT DISCUSSION GUIDE





AI IS ALREADY BEING
USED ACROSS THE
ORGANIZATION.



WITHOUT
STRUCTURE, THIS
OFTEN LEADS TO:



INCONSISTENT
RESULTS



UNCLEAR
OWNERSHIP



INCREASED
OPERATIONAL AND
REPUTATIONAL RISK



THIS GUIDE
SUPPORTS
STRUCTURED
DISCUSSIONS
BEFORE EXPANDING
AI USAGE FURTHER.

WHY THIS MATTERS



REVIEW CURRENT
AI USAGE AND
READINESS



FOCUS ON HOW
AI IS BEING USED
TODAY



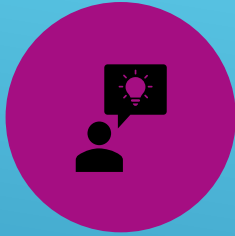
ENCOURAGE
OPEN, PRACTICAL
DISCUSSION



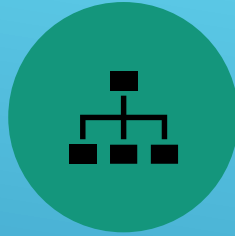
CAPTURE
DECISIONS THAT
GUIDE NEXT STEPS

HOW TO USE THIS GUIDE





WHERE IS AI
CURRENTLY BEING
USED?



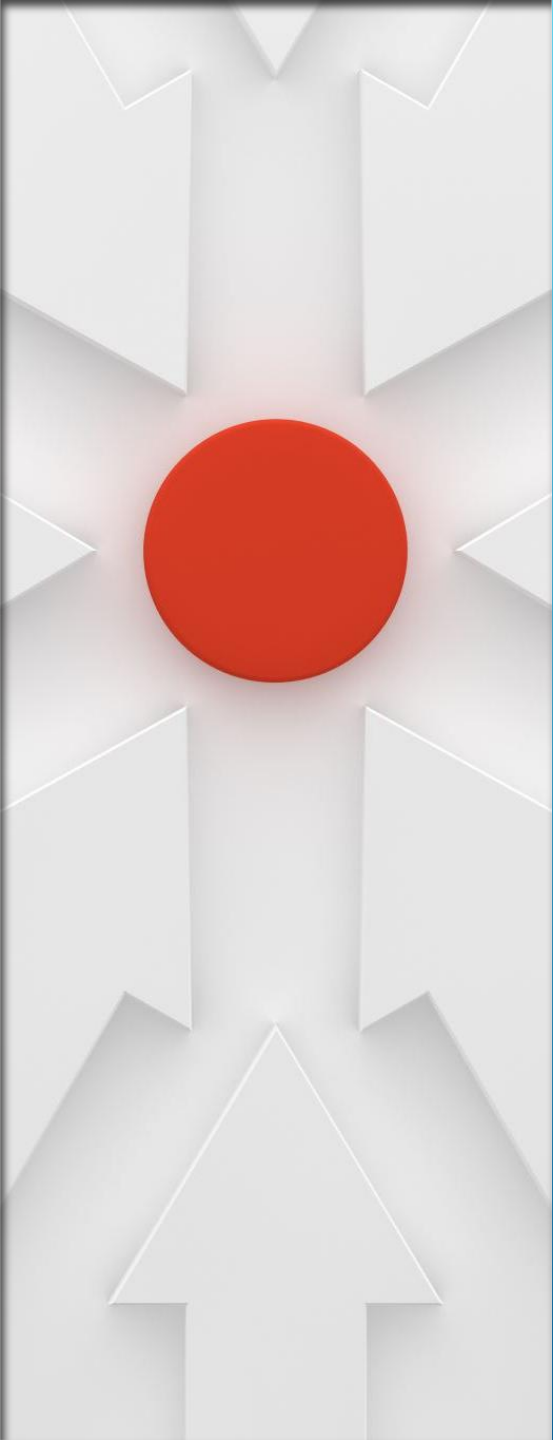
IS USAGE
STRUCTURED OR
INFORMAL?



ARE THERE KNOWN
RISKS OR
INCONSISTENCIES?


CURRENT STATE SNAPSHOT



- 
- ▶ Is there clear ownership?
 - ▶ Is leadership aligned on direction?
 - ▶ Are expectations clearly defined?

LEADERSHIP ALIGNMENT



- 
- ▶ Are risk tiers defined?
 - ▶ Are policies in place?
 - ▶ Is acceptable use clearly defined?

GOVERNANCE & GUARDRAILS



WORKFORCE CAPABILITY

- ▶ Is workforce capability aligned with AI usage?
- ▶ Are skills aligned to needs?
- ▶ Is confidence improving?

WORKFLOW INTEGRATION

- ▶ Are workflows clearly defined?
- ▶ Are use cases structured?
- ▶ Is usage consistent across teams?



What has improved?



What gaps remain?



What risks are still present?

KEY INSIGHTS



CONFIRM INITIAL
GUARDRAILS



IDENTIFY ONE PILOT
WORKFLOW



ASSIGN CLEAR
OWNERSHIP



PREPARE FOR
STRUCTURED STAGE
2 ROLLOUT



RESPONSIBLE AI
ADOPTION STARTS
WITH STRUCTURED
CAPABILITY, NOT
TOOLS.

NEXT STEPS

